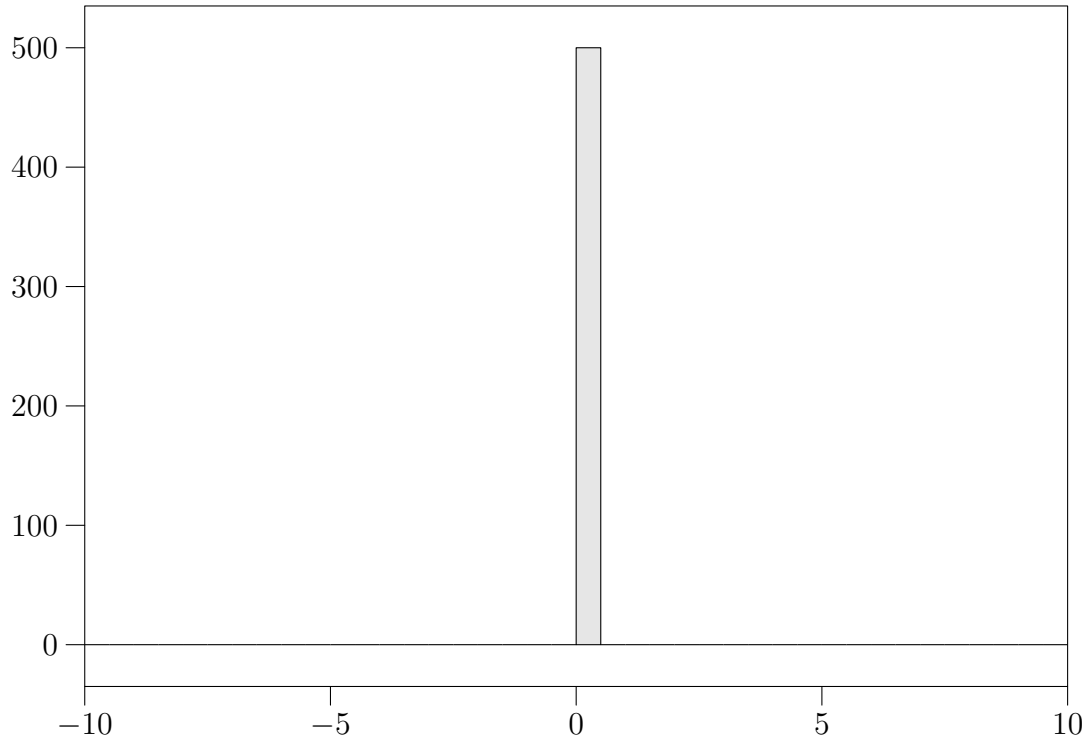


1



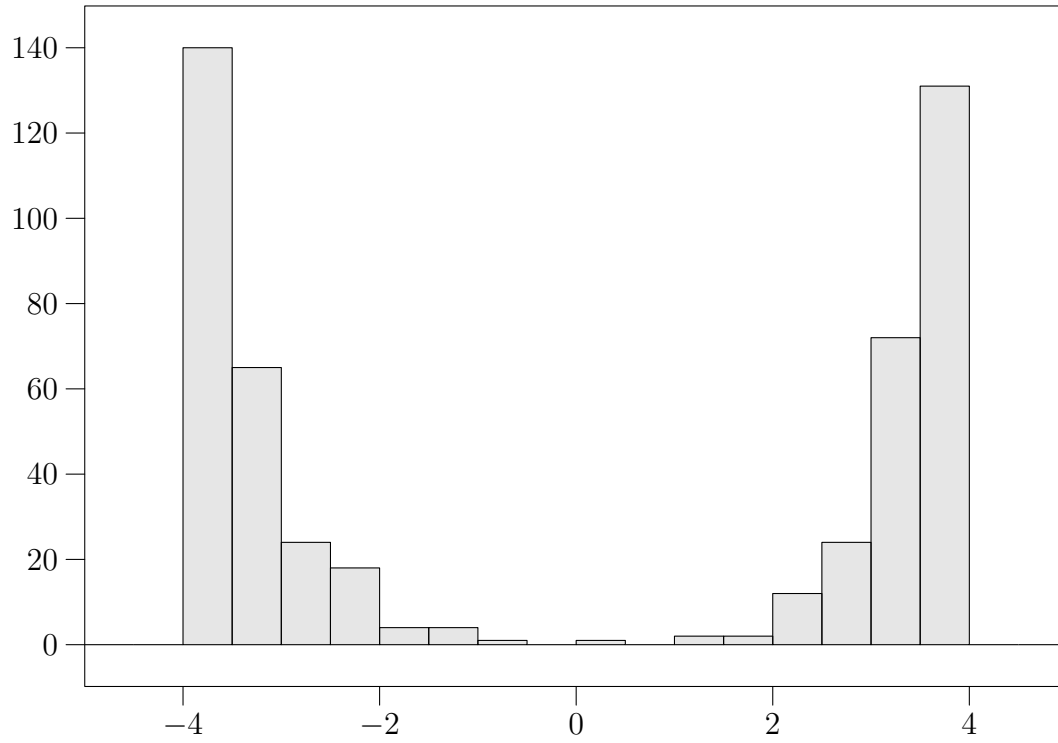
Data within bounds:

$$\langle \text{Observable} \rangle = 0 \pm 0 \quad [n_{\text{entries}} = 500]$$

All data:

$$\langle \text{Observable} \rangle = 0 \pm 0 \quad [n_{\text{entries}} = 500]$$

2



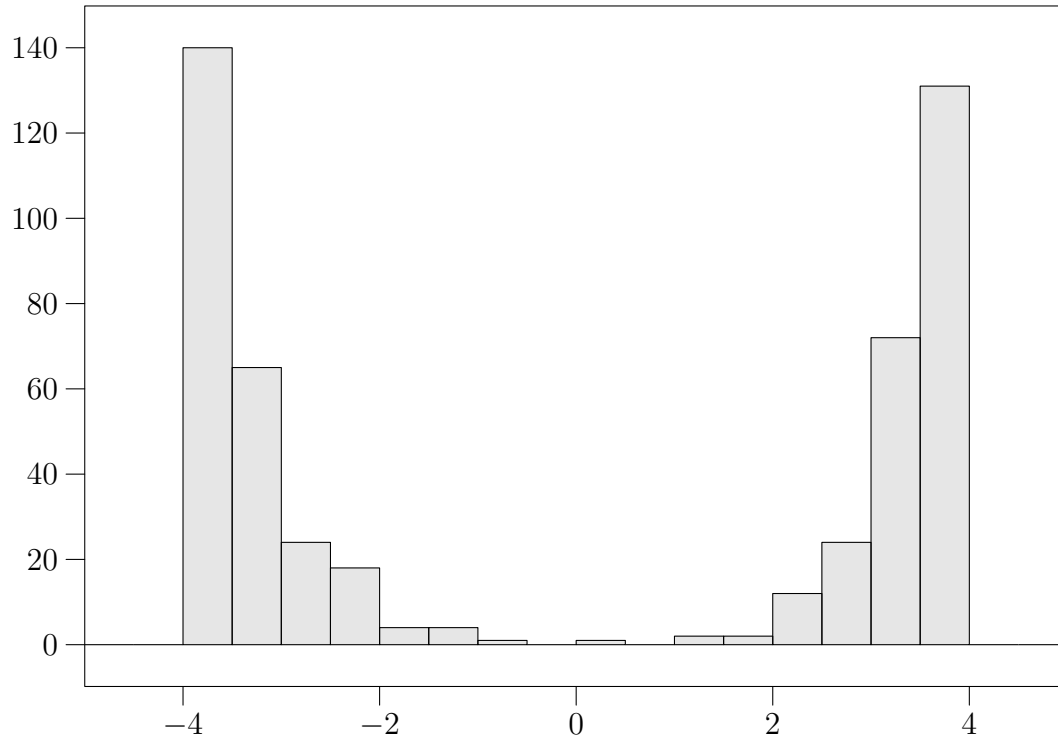
Data within bounds:

$\langle \text{Observable} \rangle = -0.063 \pm 0.15$ [$n_{\text{entries}} = 500$]

All data:

$\langle \text{Observable} \rangle = -0.063 \pm 0.15$ [$n_{\text{entries}} = 500$]

3



Data within bounds:

$\langle \text{Observable} \rangle = -0.063 \pm 0.15$ [$n_{\text{entries}} = 500$]

All data:

$\langle \text{Observable} \rangle = -0.063 \pm 0.15$ [$n_{\text{entries}} = 500$]