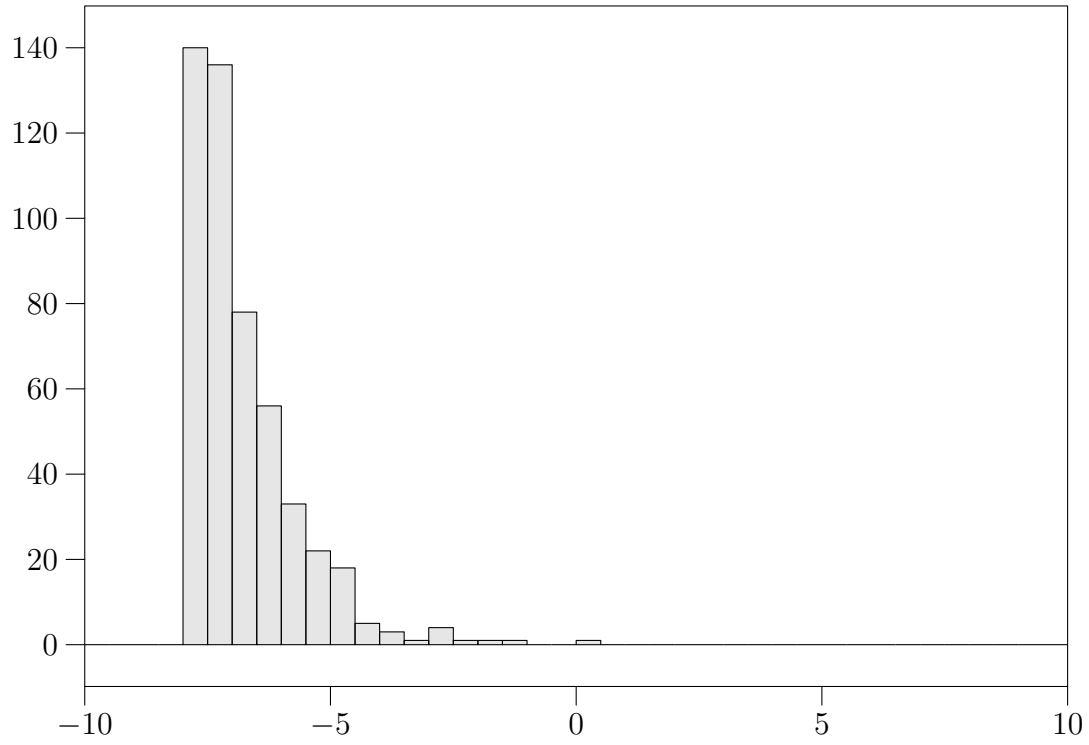


1



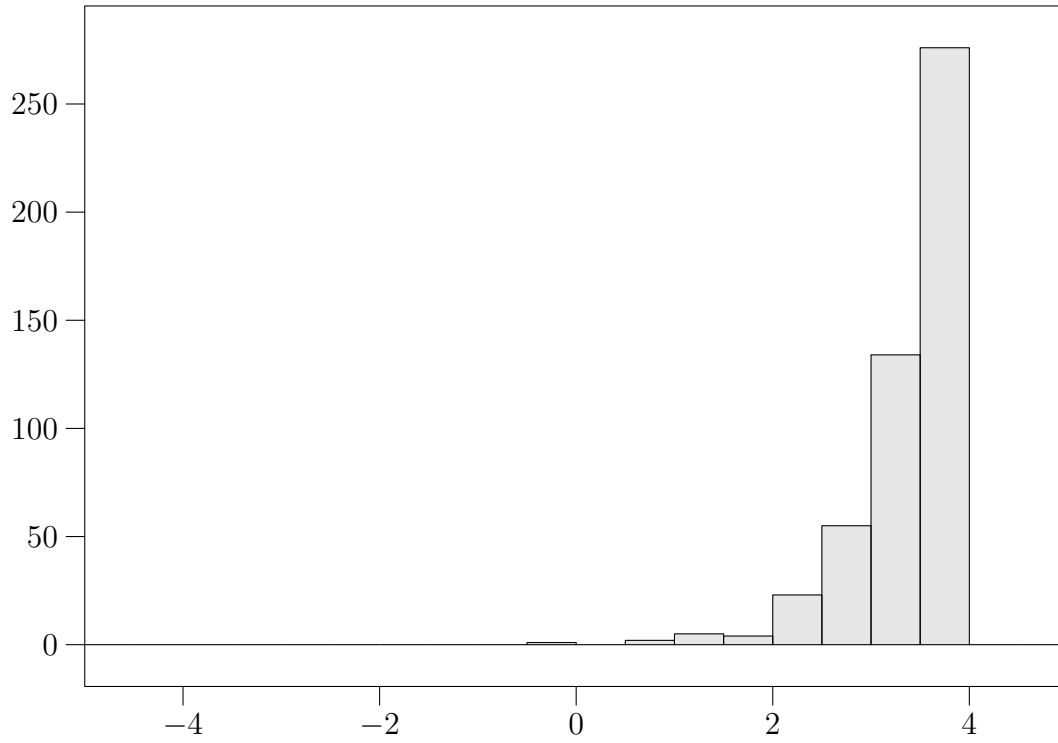
Data within bounds:

$\langle \text{Observable} \rangle = -6.7826 \pm 0.048$ [$n_{\text{entries}} = 500$]

All data:

$\langle \text{Observable} \rangle = -6.7826 \pm 0.048$ [$n_{\text{entries}} = 500$]

2



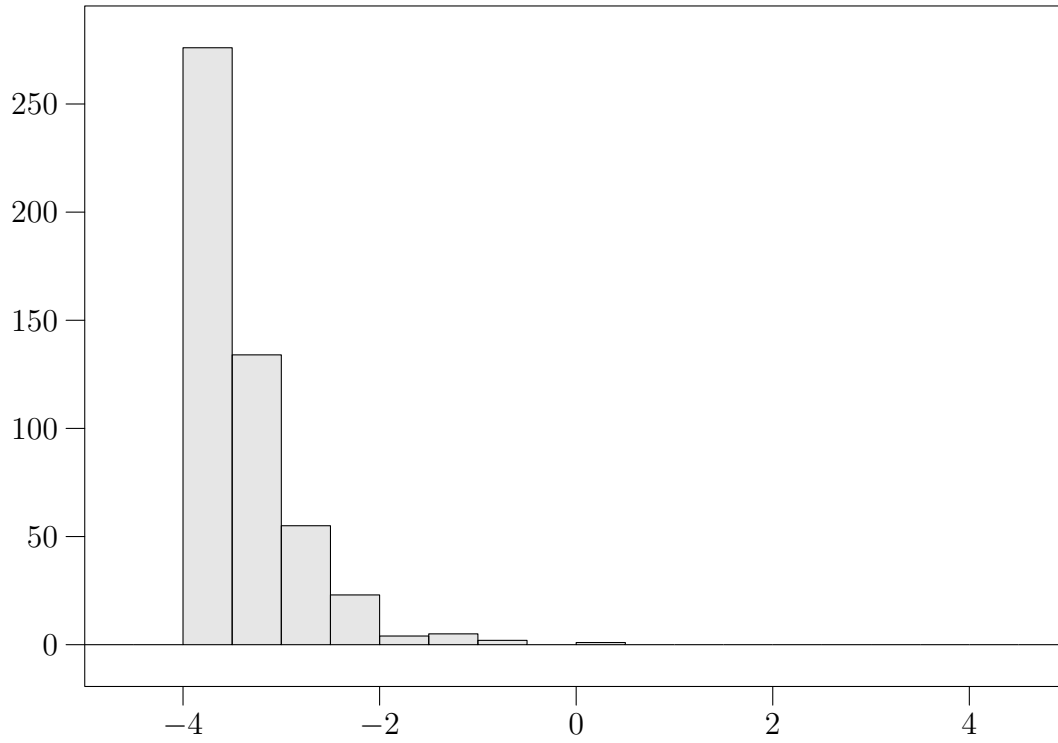
Data within bounds:

$$\langle \text{Observable} \rangle = 3.3913 \pm 0.024 \quad [n_{\text{entries}} = 500]$$

All data:

$$\langle \text{Observable} \rangle = 3.3913 \pm 0.024 \quad [n_{\text{entries}} = 500]$$

3



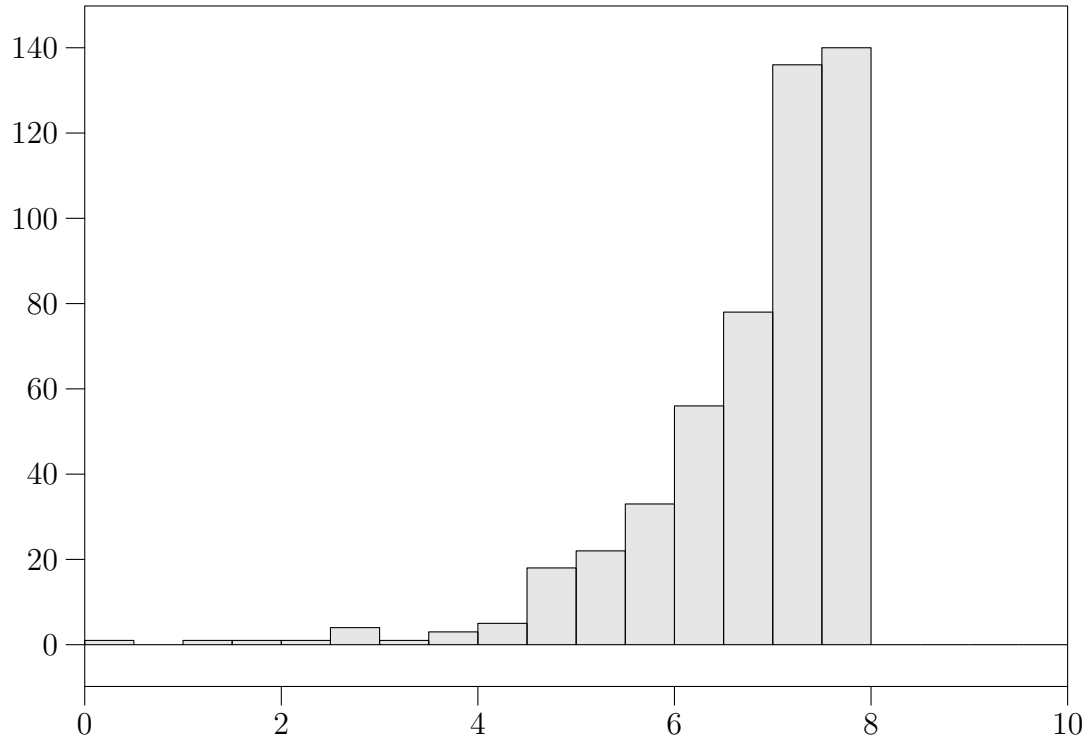
Data within bounds:

$$\langle \text{Observable} \rangle = -3.3913 \pm 0.024 \quad [n_{\text{entries}} = 500]$$

All data:

$$\langle \text{Observable} \rangle = -3.3913 \pm 0.024 \quad [n_{\text{entries}} = 500]$$

4



Data within bounds:

$$\langle \text{Observable} \rangle = 6.7827 \pm 0.048 \quad [n_{\text{entries}} = 500]$$

All data:

$$\langle \text{Observable} \rangle = 6.7827 \pm 0.048 \quad [n_{\text{entries}} = 500]$$