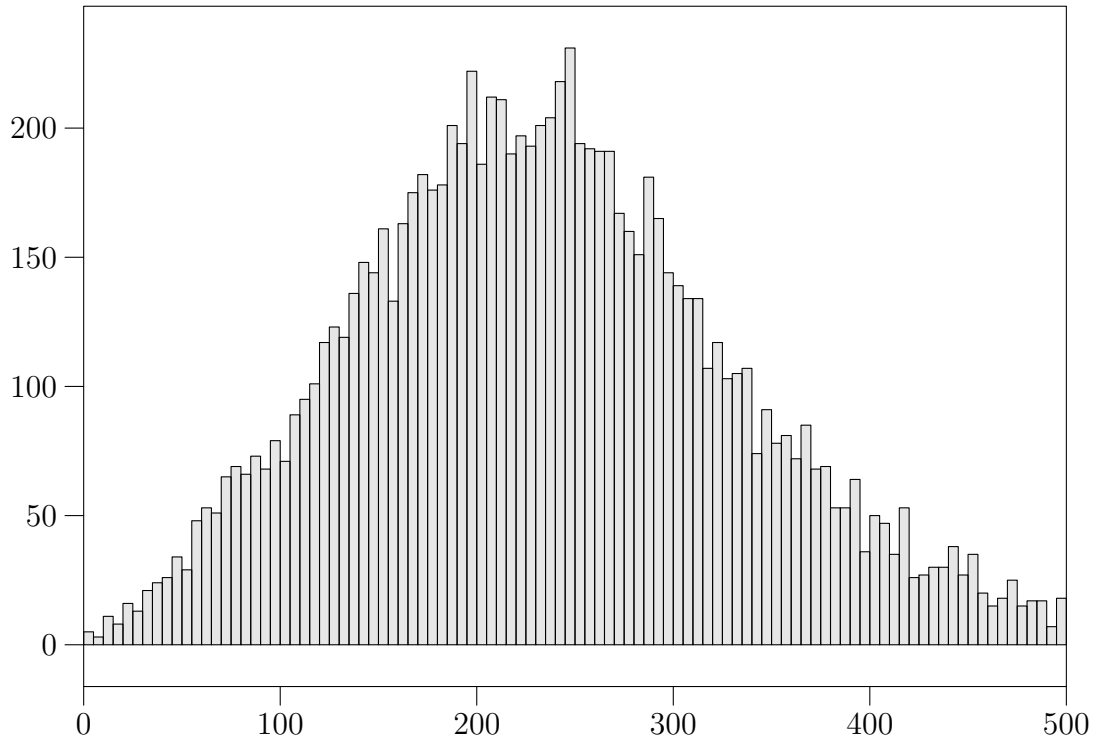


# 1



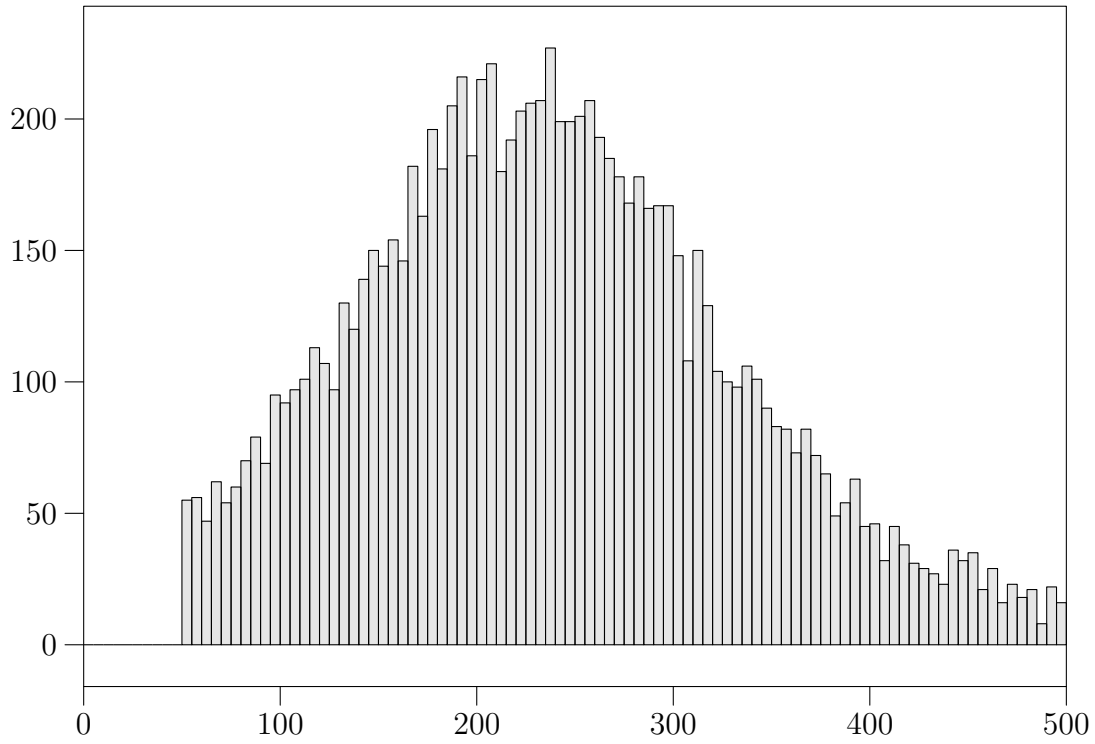
**Data within bounds:**

$\langle \text{Observable} \rangle = 234.5 \pm 0.97$  [ $n_{\text{entries}} = 9789$ ]

**All data:**

$\langle \text{Observable} \rangle = 241.7 \pm 1.07$  [ $n_{\text{entries}} = 10000$ ]

## 2



### Data within bounds:

$$\langle \text{Observable} \rangle = 237.6 \pm 0.95 \quad [n_{\text{entries}} = 9775]$$

### All data:

$$\langle \text{Observable} \rangle = 245.6 \pm 1.07 \quad [n_{\text{entries}} = 10000]$$