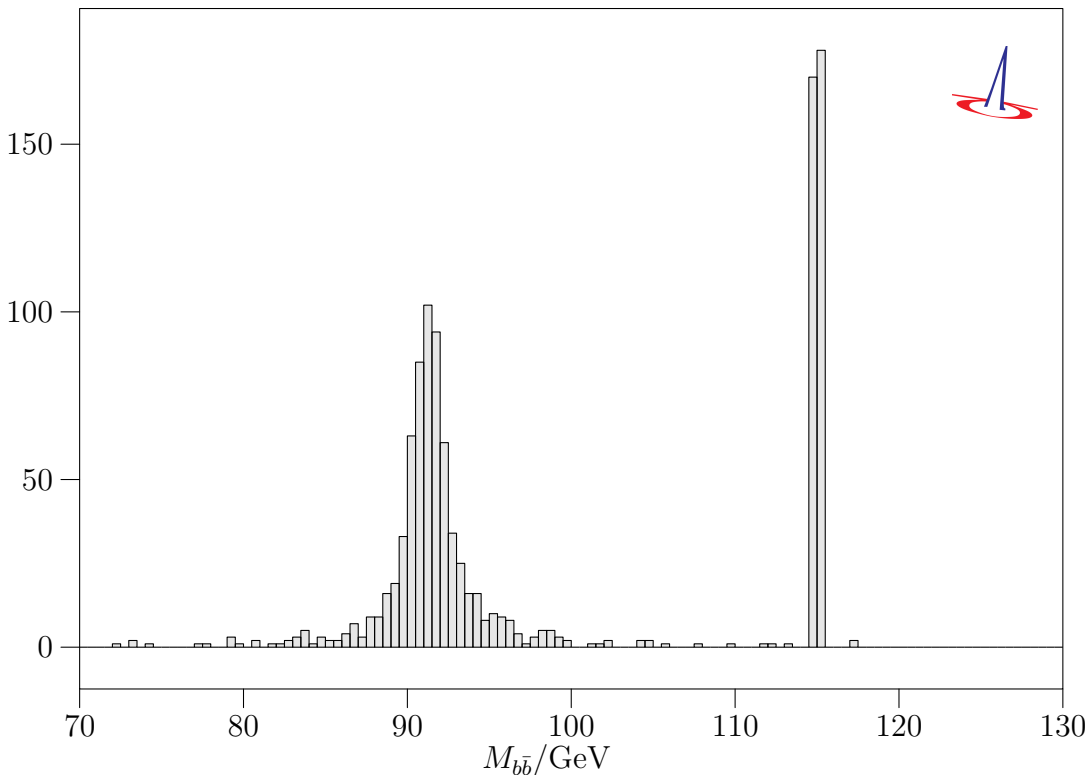


2 $b\bar{b}$ invariant mass distribution in $e^+e^- \rightarrow \nu\bar{\nu}b\bar{b}$

A WHIZARD Example. Light Higgs search at LEP. A 115 GeV pseudo-Higgs has been added. Luminosity enlarged by two orders of magnitude.

N_{events}



Data within bounds:

$$\langle \text{Observable} \rangle = 99.31 \pm 0.36 \quad [n_{\text{entries}} = 1050]$$

All data:

$$\langle \text{Observable} \rangle = 97.86 \pm 0.48 \quad [n_{\text{entries}} = 1070]$$